



## ACADEMIC HISTORY

University of Michigan, Ann Arbor, MI

**Eric and Wendy Schmidt AI in Science Postdoctoral Fellowship**, Fall 2023 – Present

- Schmidt Futures, *University of Michigan Institute for Data Science, School for Environment and Sustainability*

**Michigan Life Sciences Fellowship**, Fall 2019 – Summer 2023

- University of Michigan Life Sciences Institute, *Departments of Ecology and Evolutionary Biology and Earth Sciences*
  - Science Communication Fellow U.M. Natural History Museum (Fall 2020 - Present)
  - Inclusive Teaching in STEM Certificate, Center for Research on Learning and Teaching (Completed Winter 2020)
  - Rackham Professional Development Diversity, Equity, and Inclusion Certificate (May 2020 - May 2022)

Education

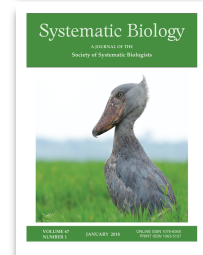
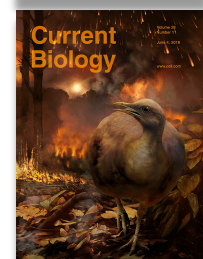
**Ph.D., Ecology and Evolutionary Biology**, Cornell University – Ithaca, NY, August 2019

**B.S., Ecology and Evolutionary Biology**, Yale College – New Haven, CT, May 2010

## PUBLICATIONS

### Peer Reviewed

1. **Pegan, T.\***, Berv, J. S., Gulson-Castillo, E., Winger, B., The pace of mitochondrial molecular evolution varies with seasonal migration distance. doi.org/10.1101/2023.08.01.551470 *in press at Evolution*. See bioRxiv. \*Graduate student advisee.
2. **Hughes, J. J\*†**, Berv, J. S.\*, Chester, S. G. B., Sargis, E. J., Field, D. J. **2021**. Ecological selectivity and the evolution of mammalian substrate preference across the K–Pg boundary. *Ecology and Evolution*. doi.org/10.1002/ece3.8114 \*shared first authorship, †graduate student advisee.
3. **Berv, J. S.**, Campagna, L., Feo, T. J., **Castro-Astor, I\***, Ribas, C. C., Prum, R. O., Lovette, I. J., **2021**. Genomic phylogeography of the White-crowned Manakin *Pseudopipra pipra* (Aves: Pipridae) illuminates a continental-scale radiation out of the Andes. *Molecular Phylogenetics and Evolution*. doi.org/10.1016/j.ympev.2021.107205. \*Graduate student advisee.
4. van Els, P., Zarza, E., Rocha Moreira, L., Gómez-Bahamón, V., Santana, A., Aleixo, A., Ribas, C. C., do Rêgo, P. S., Santos, M. P. D., Zyskowski, K., Prum, R. O., **Berv, J. S., 2021**. Recent divergence and lack of shared phylogeographic history characterize the diversification of neotropical savanna birds. *Journal of Biogeography*. doi.org/10.1111/jbi.14065
5. Field, D.J., **Berv, J.S.**, Hsiang, A.Y., Lanfear, R., Landis, M.J., Dornburg, A., **2020**. Timing the Extant Avian Radiation: The Rise of Modern Birds, and the Importance of Modeling Molecular Rate Variation. In: Pittman, M., Xu, X. (Eds.), *Pennaraptoran Theropod Dinosaurs Past Progress and New Frontiers*. *Bulletin of the American Museum of Natural History*, New York, pp. 159-181. [digitallibrary.amnh.org/handle/2246/7237](https://digitallibrary.amnh.org/handle/2246/7237) (Cover art right)
6. Fecchio, Alan ... **Berv, J.S.**, et al (author list truncated) **2019**. An inverse latitudinal gradient in infection probability and phylogenetic diversity for *Leucocytozoon* blood parasites in New World birds. *Journal of Animal Ecology*. doi.org/10.1111/1365-2656.13117.
7. Field, D.J., Bercovici, A., **Berv, J.S.**, Dunn, R., Fastovsky, D.E., Lyson, T.R., Vajda, V., Gauthier, J.A. **2018**. Early Evolution of Modern Birds Structured by Global Forest Collapse at the End-Cretaceous Mass Extinction. *Current Biology*. <https://doi.org/10.1016/j.cub.2018.04.062> (Cover art right)
8. Clark, C.J., McGuire, J.A., Bonaccorso, E., **Berv, J.S.**, Prum, R.O **2018**. Complex coevolution of wing, tail, and vocal sounds of courting male bee hummingbirds. *Evolution*. doi.org/10.1111/evo.13432
9. **Berv, J.S.** Field, D. J. **2018**. Genomic Signature of an Avian Lilliput Effect across the K-Pg Extinction, *Systematic Biology*. doi.org/10.1093/sysbio/syx064. (Cover art right). **Society of Systematic Biologists Publisher's Award for Excellence in Systematic Research.**
10. Prum, R.O. \*, **Berv, J.S.\***, Dornburg, A., Field, D. J., Townsend, J.P., Lemmon, E.M., Lemmon, A. R. **2015**. A comprehensive phylogeny of birds (Aves) using targeted next-generation DNA





sequencing, *Nature*, [doi.org/10.1038/nature15697](https://doi.org/10.1038/nature15697) \*shared first authorship.

11. Feo, T., Musser, J., Berv, J. S., Clark, C. J. 2015. Divergence in morphology, calls, song, mechanical sounds, and genetics supports species status for the Inagan hummingbird (Trochilidae: Calliphlox "evelynae" lyrura), *The Auk: Ornithological Advances*, [doi.org/10.1642/AUK-14-108.1](https://doi.org/10.1642/AUK-14-108.1)
12. Berv, J. S., Prum, R.O. 2014. A comprehensive multilocus phylogeny of the Neotropical cotingas (Cotingidae, Aves) with a comparative evolutionary analysis of breeding system and plumage dimorphism and a revised phylogenetic classification. *Molecular Phylogenetics and Evolution*. [doi.org/10.1016/j.ympev.2014.09.001](https://doi.org/10.1016/j.ympev.2014.09.001).

### Pre-prints

1. Weiss, A. K. \*, Berv, J. S. Habitat-associated substitution rates in chemosynthetic deep-sea invertebrates. *bioRxiv pending* \*Graduate student advisee. Under review at *Evolution*.
2. Gregg, W. C. T., Hughes, J. J.\*, Kumon, T., Berv, J. S., Lampson, M., Levine, M., Searle, J. B., Good, J. M. The genomic landscape, causes, and consequences of extensive phylogenomic discordance in Old World mice and rats [doi.org/10.1101/2023.08.28.555178](https://doi.org/10.1101/2023.08.28.555178) *bioRxiv* \*Graduate student advisee. Under review at *Molecular Biology and Evolution*.
3. Berv, J.S. Singhal, S., Field, Daniel. J., Walker-Hale, N.\*, Mchugh, W. S.\*, Shipley, J. R., Miller, E.T., Kimball, R.T., Braun, E.L., Dornburg, A., Parins-Fukuchi, C., Prum, R.O., Friedman, M., Smith, S.A., Molecular early burst associated with the diversification of birds at the K–Pg boundary. [doi.org/10.1101/2022.10.21.513146](https://doi.org/10.1101/2022.10.21.513146) *bioRxiv* \*Graduate student advisee. Revised and resubmitted to *Science*.

### In preparation

1. Berv, J.S., Saulsbury, J. \*, “Ghosts in the machine” of diversification analysis. \*Graduate student advisee. Talk recording: [https://bit.ly/berv\\_umich\\_2021](https://bit.ly/berv_umich_2021)
2. P. Miranda\*, Berv, J.S. Admixture analyses of White-crowned Manakin populations support the recognition of many species. \*Undergraduate advisee
3. McHugh, S. W.\*, Berv, J.S., Zamudio, K.R. Evolution of Body Size and Sexual Size Dimorphism in Tortoises. \*Undergraduate advisee.
4. Rivero-Vega, R.A.\*, Berv, J.S., Clarke, J.T., Friedman, M. Inconsistent patterns of phenotypic evolution among canonical ‘living fossil’ lineages. \*Graduate student advisee.

### Other Publications

1. Miller et al, 2007. Phase 072 Expedition Report for The Yachana Foundation and Museo Ecuatoriano de Ciencias Naturales
2. Gearty, W., O’Meara, B., Berv, J. S., Ballen, G. S., Ferreira, D., Lapp, H., Schmitz, L., Smith, M. R., Upham, N. S., Nations, J. A. (2023). CRAN Task View: Phylogenetics. Version 2023-04-03. URL <https://CRAN.R-project.org/view=Phylogenetics>.

## SCHOLARSHIP AWARDS

---

### 2018

1. **Publisher’s Award for Excellence in Systematic Research:** Oxford University Press, award for the best student paper in the journal *Systematic Biology*, the journal of the **Society of Systematic Biologists**
2. **Society of Systematic Biologists: Ernst Mayr Award Finalist** (Global competition)
3. **Schmidt Science Fellows (finalist nominated by Cornell University)**

### 2016

4. **Society for the Study of Evolution: W.D. Hamilton Award Finalist** (US competition)

## FUNDRAISING: \$922,417

---

### University of Michigan (Postdoctoral)

1. Michigan Life Sciences Fellows, Awarded Spring 2019, \$300,000 (salary and research funds)
2. Eric and Wendy Schmidt AI in Science Postdoctoral Fellowship, Awarded Spring 2023, \$152,000 (salary only)

### National Science Foundation



3. Postdoctoral Research Fellowship in Biology, Spring 2019, \$207,000 (awarded and declined)
4. Doctoral Dissertation Improvement Grant, Spring 2017, \$20,226.00, DEB-1700786
5. Graduate Research Fellowship, Spring 2014 \$138,000, DGE-1650441

#### Academic Societies

6. Society for the Study of Evolution Travel Award, Spring 2018, \$500
7. Society for Molecular Biology and Evolution Young Investigator Travel Award, Spring 2018, \$2,450
8. Society for the Study of Evolution **W.D. Hamilton Award Finalist**, June 2016, \$500
9. National Science Foundation—Society of Systematic Biologists Travel Award, Summer 2015, \$1,750
10. Society of Systematic Biologists Graduate Student Research Award, Fall 2015, \$1,500

#### Cornell University (Ph.D. institution)

11. Melinda and Irwin Simon Student Research Fund, Spring 2019, (Cornell Lab of Ornithology Fellowship), \$19,829
12. Paul P. Feeny Graduate Student Research Fund, Summer 2017, (Cornell EEB), \$1,200
13. Paul P. Feeny Graduate Student Research Fund, Summer 2016, (Cornell EEB), \$1,200
14. Andrew W. Mellon Student Research Grant, Spring 2016, \$1,000
15. Sigma-Xi small grant, Spring 2016, \$600
16. Cornell Laboratory of Ornithology Athena grant, Fall 2015, \$4,000
17. Paul P. Feeny Graduate Student Research Fund, Summer 2015, \$1,200
18. Andrew W. Mellon Student Research Grant, Spring 2015, \$1,000
19. Cornell Laboratory of Ornithology Athena Fund, Fall 2014, \$5,000
20. Paul P. Feeny Graduate Student Research Fund, Summer 2014, \$1,200
21. Orenstein Fund, Summer 2014, \$750
22. Charlie E. Treman, Jr. Graduate Fellowship, Spring 2015 (Cornell Lab of Ornithology Fellowship), \$18,111
23. Kramer Graduate Fellowship, Summer 2014 (Cornell Lab of Ornithology Summer Fellowship), \$4,950
24. Tyson Graduate Fellowship, Spring 2014, (Cornell Lab of Ornithology Fellowship) \$18,041
25. Cornell Laboratory of Ornithology Athena Fund, Fall 2013, \$3,610

#### Yale College (Undergraduate institution)

26. Mellon Forum Undergraduate Research Grant, Fall 2009, \$500
27. The Yale College Dean's Research Fellowship in the Sciences, May 2009, \$2,000
28. Yale Peabody Museum Summer Fellowship, May 2009, \$5,000
29. The Environmental Fellowship for Study and Research, May 2009, \$2,000
30. The Yale Science and Engineering Association Fellowship, May 2009, \$2,000
31. The Alan S. Tetelman Fellowship for Study Abroad, May 2009 \$1,800
32. Paul K. and Evelyn Elizabeth Cook Richter Scholarship, May 2009, \$1,500
33. The Environmental Fellowship for Study and Research, May 2008, \$2,000

## PROFESSIONAL SERVICE

---

### Commitment to Diversity, Equity, and Inclusion

#### University of Michigan (2019-2023)

- DNA Day, Co-created first module on Evolutionary Biology <https://midnaday.com/>
  - Extension of National DNA Day which brings scientists from the state of Michigan to local high schools to present interactive, hands-on lessons about DNA.
  - Content reach: ~100 high school students 2021 (last data)
- Rackham Professional Development Diversity, Equity, and Inclusion Certificate
  - **2-year program, completed May 2022**
  - **Core trainings:** Learning About Racism/Anti-Racism, Bystander Intervention, Unconscious Bias, Creating an Inclusive Environment, Connecting Across Differences
  - <https://rackham.umich.edu/professional-development/dei-certificate/>
- **Academic Parity Movement** <https://paritymovement.org/>
  - **501(c)3 non-profit started in 2019 with the goal of ensuring that no researcher suffers from violence, discrimination, or academic bullying without sufficient support**
  - **Roles:**
    - **Joined December 2022 (only representative from the fields of EEB)**
    - **Newsletter co-editor, started December 2022**



- **Generating content for anti-bullying workshops (see DEI statement)**

#### Cornell University (2013-2019)

- Diversity Preview Weekend, [www.cornelldpw.org](http://www.cornelldpw.org)
  - **Founding member**; this event is intended to introduce students from underrepresented backgrounds to the graduate school application process and to connect them with faculty members that share research interests (see DEI statement).
  - Housing logistics and application reviewer 2017-2019
- Cornell EEB departmental service
  - Graduate Student Association
    - Invited Speaker Committee (2013, 2014, 2015)
    - Holiday Party Committee (2016)
    - Representative at faculty meetings (2017)

#### Scientific Media Consultant

- *The Magic School Bus Rides Again*. Sequel to Scholastic's "The Magic School Bus" TV Series 2017-2021, Netflix
  - Consultant end credit, provided detailed notes on principles of evolutionary biology and ornithology

#### Academic scholarship service

**Peer review service — 59 verified reviews** (Web of Science Reviewer profile: [https://bit.ly/berv\\_WOS](https://bit.ly/berv_WOS))

- Systematic Biology (14), Molecular Phylogenetics and Evolution (6), Biological Journal of the Linnean Society (3), Molecular Ecology (3), PeerJ (2), MDPI Birds (1), F1000Research (1), Gondwana Research (1), Journal of Biogeography (8), Proceedings of the Royal Society B: Biological Sciences (6), Evolution (5), Molecular Biology and Evolution (2), Proceedings of the National Academies of Sciences (2), MDPI Diversity (1), Functional Ecology (1), The Auk: Ornithological Advances (1), Ornithology (3)

#### Software

- The Comprehensive R Archive Network (CRAN) Phylogenetics Task View, **Co-maintainer, 2022-present**  
This task view describes R packages that (i) facilitate the handling, manipulation, and analysis of phylogenetic trees; (ii) implement comparative phylogenetic methods; (iii) apply phylogenetic methods to specific disciplines, <https://github.com/bomeara/PhylogeneticsTaskView/>

## TEACHING AND MENTORSHIP

---

### Study of pedagogy

- University of Michigan Natural History Museum
  - Science Communication Certificate, Fall 2020
    - **Core trainings:** How people learn, facilitation strategies, presentation strategies.
    - Regular presentations on "how to think like an evolutionary biologist" to Ann Arbor Public School students. Winter-Spring 2020-2021, COVID-19 virtual outreach.
- University of Michigan Center for Research on Learning and Teaching
  - Postdoctoral Short Course on College Teaching in Science and Engineering, Winter 2020
    - Ten-week course, <https://crlt.umich.edu/programs/psc>  
**Core trainings:** How students learn, cultivating an inclusive classroom, effective course design.
- Cornell University, John. S. Knight Institute for Writing in the Disciplines
  - Writing 7101: Writing in the Majors Seminar, Fall 2013.
    - **Core trainings:** incorporating writing instruction into major/discipline specific classes, course design and syllabus creation, strategies for fair grading and evaluation, feedback on writing across disciplines, classroom management.

### Undergraduate Courses (Graduate Teaching Assistant)

- BIOEE 1780: Evolutionary Biology and Diversity, **Cornell University**.
  - "Writing in the Majors" seminar, taught Fall 2013, 2014, 2015, 2018.  
<https://knight.as.cornell.edu/writing-in-the-majors>  
I designed and led four 15-week writing seminars, with guidance from the John. S. Knight Institute for Writing in the Disciplines. My course offered undergraduates an opportunity to engage with and learn to



write about primary scientific literature in a variety of formats. **Student evaluations available.**

- BIOEE 2650, Tropical Field Ecology and Behavior (taught in Kenya), **Cornell University, Winter 2014.**

### Undergraduate Advisees

1. Daniel Williams, Yale College Class of 2011, Senior thesis project
2. Daniel Veronese, Cornell College of Arts and Sciences Class of 2017
3. Hyun Seok Yoon, Cornell College of Arts and Sciences Class of 2017
4. Andrew Dreelin, Cornell College of Arts and Sciences Class of 2018
5. Eric Sibbald, Cornell College of Arts and Sciences Class of 2016
6. Sean McHugh, Cornell College of Arts and Science Class of 2018
7. Matthew Granger, University of Bath, Class of 2019
8. Miranda Pless, University of Michigan, Class of 2023

### Graduate Student Advisees

9. Jonathan J. Hughes, Cornell University, PhD.
10. James Saulsbury, University of Michigan, PhD.
11. Sean McHugh, University of Washington St. Louis, PhD.
12. Teresa Pegan, University of Michigan, PhD.
13. Rafael Rivero-Vega, University of Michigan, PhD.
14. Nathanael Walker-Hale, University of Cambridge, PhD.

## CONFERENCE PRESENTATIONS

---

### 2023

1. **Indo-Pacific Fish Conference. Auckland, New Zealand. November 20-24<sup>th</sup>, 2023.**
2. **Evolution. Albuquerque, New Mexico. June 21-25<sup>th</sup>, 2023.**
3. **Society of Systematic Biologists Standalone Meeting. México City, México. Jan. 14-15<sup>th</sup>, 2023.**  
“Ghosts in the machine” of diversification analysis. Presenter: J. S. B.

### 2022

- Evolution.** Cleveland, Ohio. June 24-28<sup>th</sup>.
4. Molecular early burst associated with the diversification of birds at the K-Pg boundary. Presenter: **J. S. B.**
- The III Meeting of Systematics, Biogeography, and Evolution,** Virtual, July 2022.
5. Molecular early burst associated with the diversification of birds at the K-Pg boundary. Presenter: **J. S. B.**  
**Recording available:** [https://bit.ly/SBE\\_berv\\_2022](https://bit.ly/SBE_berv_2022) (long format talk)

### 2021

- American Society of Mammologists Meeting.** Virtual, June 14–18<sup>th</sup>.
6. Ecological selectivity and the evolution of mammalian arboreality across the K-Pg boundary. Presenter: J. J. H.
- Evolution.** Virtual, June 21-25<sup>th</sup>.
7. Molecular early burst associated with the diversification of birds at the K-Pg boundary. Presenter: **J. S. B.**
  8. The influence of seasonal migration on molecular evolution in North American boreal birds. Presenter: T. P.

### 2020

- Society for Vertebrate Paleontology.** Virtual. October 12–17<sup>th</sup>.
9. Evolution of mammalian arboreality and the K-Pg mass extinction. Presenter: J. J. H.
- North American Ornithological Congress.** Virtual, August 10-15<sup>th</sup>.
10. Genomic Phylogeography of the White-crowned Manakin Illuminates a Continental-scale Radiation Out of the Andes. Invited Manakin Symposium Talk.

### 2018

- Evolution,** Montpellier, France. August 19-22<sup>nd</sup>
11. Recalcitrance of avian divergence times and phylogenetic topology may be related to selection for reduced body size across the K–Pg boundary. **Ernst Mayr Award Finalist Talk.** Presenter: **J. S. B.**
- Society for Molecular Biology and Evolution, Yokohama Japan,** July 8-12<sup>th</sup>.
12. Recalcitrance of avian divergence times and phylogenetic topology may be related to selection for reduced body





size across the K–Pg boundary. Divergence Time Methodologies Symposium Talk. Presenter: **J. S. B.**

## 2017

**Society of Vertebrate Paleontology**, Calgary, Canada, August 23–26<sup>th</sup>.

13. Post K/Pg Extinction Lilliput Effect may influence avian molecular clocks. Special Symposium Talk.

**Ornithological Congress of the Americas**, Puerto Iguazú, Argentina, August 8–11<sup>th</sup>. Presenter: **J. S. B.**

14. Genomic Phylogeography of the White Crowned Manakin (Aves: Pipridae) illuminates cryptic differentiation and extreme song evolution; Genomic Advances Symposium. Presenter: **J. S. B.**

## 2016

**Geology Society of America**, Denver, Colorado, September 25–28<sup>th</sup>.

15. Post K/Pg Extinction Lilliput Effect may influence avian molecular clocks. Special Symposium. Presenter: **J. S. B.**

**North American Ornithological Congress**, Washington, DC, August 16–20<sup>th</sup>.

16. Post K/Pg Extinction Lilliput Effect may influence avian molecular clocks. Presenter: **J. S. B.**

**Evolution**, Austin, Texas, June 26–30<sup>th</sup>.

17. Post K/Pg Extinction Lilliput Effect may influence avian molecular clocks. **Hamilton Award Symposium Finalist Talk**. Presenter: **J. S. B.**

## 2015

**X Neotropical Ornithological Congress**, Manaus, Brazil, July 19–24<sup>th</sup>.

18. A genomic approach to species delimitation and historical biogeography of the White-Crowned Manakin. Special Symposium. Presenter: **J. S. B.**

**Evolution**, Guarujá, Brazil, June 26–30<sup>th</sup>.

19. A Fully Resolved, Comprehensive Genomic Phylogeny of Birds (Aves) using Targeted Next Generation Sequencing. Presenter: **J. S. B.**

## 2014

**Evolution 2014**. National Evolutionary Biology Synthesis Center, Raleigh, North Carolina, June 20–24<sup>th</sup>.

20. A comprehensive Multilocus Phylogeny of the Neotropical Cotingas. Presenter: **J. S. B.**

## 2012

**First Joint Congress on Evolutionary Biology**, Ottawa, Ontario, Canada, July 6–10<sup>th</sup>.

21. Emberizoides (Aves: Thraupidae) population genetics reveal novel biogeographic connections across Amazonia. Poster presenter: **J. S. B.**

## 2010

**25<sup>th</sup> International Ornithological Congress, Campos do Jordão, São Paulo, Brazil**, August 25–29<sup>th</sup>.

22. Genetic data support Sipaliwini Savanna's affiliation with the Brazilian Cerrado. Poster presenter: **J. S. B.**

23. Using radio telemetry to discover cryptic avian nests in dense tropical forest. Poster presenter: **J. S. B.**

**Evolution, Portland State University**, Portland, Oregon, June 25–29<sup>th</sup>.

24. The phylogeography of South American savanna birds: does genetic data support Sipaliwini savanna's ancestral affiliation with the Brazilian Cerrado? Poster presenter: **J. S. B.**

## INVITED TALKS/LECTURES

---

### 2023

1. **Guest lecturer in Analytical Paleobiology EARTH 444**. November 2023. Molecular Systematics.
2. **University of Toronto, Department of Ecology and Evolutionary Biology (invited seminar)**  
Recording available: [https://bit.ly/berv\\_utoronto\\_2023](https://bit.ly/berv_utoronto_2023)

### 2022

3. **Okinawa Institute of Science and Technology**, October 12, 2022.  
Recording available: [https://bit.ly/berv\\_OIST\\_2022](https://bit.ly/berv_OIST_2022)
4. **University of Michigan Department of Ecology and Evolutionary Biology**, September 20, 2022.



Recording available: [https://bit.ly/berv\\_umich\\_2022](https://bit.ly/berv_umich_2022)

5. **Cornell University, Department of Ecology and Evolutionary Biology: Evo Day 2022**, May 12, 2022
6. **University of Michigan Museum of Paleontology**, January departmental seminar

## 2021

7. **Guest lecturer in Vertebrate Paleontology EARTH 437, December 6, 2021 – “The Evolution of Birds”**  
Recording available: [https://bit.ly/Berv\\_EARTH437\\_2021](https://bit.ly/Berv_EARTH437_2021)
8. **University of Michigan Department of Ecology and Evolutionary Biology**, October, departmental seminar  
Recording available: [https://bit.ly/berv\\_umich\\_2021](https://bit.ly/berv_umich_2021)
9. **Friends of the University of Michigan Museum of Paleontology**, June 4<sup>th</sup>.

## 2020

10. **University of Massachusetts Boston Fall 2020 Biology Seminar Series**, November 20, Host **Liam Revell**  
Embracing Uncertainty: Using Genomic, Anatomical, and Life-History Data to Integrate the Micro and  
Macroevolution of Birds.  
Recording available: [https://bit.ly/umb\\_berv\\_2020](https://bit.ly/umb_berv_2020)

## 2016

11. **Guest lecturer** in Phylogenetic Systematics; Cornell BioEE3730: Biodiversity and Biology of Marine Invertebrates
12. **Larry King Memorial Keynote Lecture**, Rochester Academy of Science Fall Paper Session, November 12<sup>th</sup>.  
SURVIVING THE MASS EXTINCTION: The Amazing Story of Bird Recovery and Radiation after the End  
Cretaceous Catastrophe.
13. **SUNY Orange Community College**, Invited Lecture, October  
Dino-Birds? How modern evolutionary biology has changed our understanding of bird diversity.
14. **Cornell Laboratory of Ornithology Fall Seminar** Invited Speaker, Ithaca NY, September.
15. **SUNY ESF**, Earth Week Invited Speaker, Syracuse, NY, April.

## 2015

16. **Cornell EEB EvoGroup Invited Seminar Speaker**, Ithaca, New York, February 5<sup>th</sup>.  
Breeding system and sexual dimorphism may be evolutionarily decoupled in the Neotropical cotingas.

## 2014

17. **Cornell Laboratory of Ornithology, Invited Seminar Speaker, Ithaca, New York.**  
A comprehensive Multilocus Phylogeny of the Neotropical Cotingas, September 15<sup>th</sup>.

## 2007-2013 (pre-PhD. Candidate)

18. **Centro Universitario Regional del Litoral Atlantico, La Ceiba, Honduras.**  
From Genes to Trees. March 20, 2013.
19. **Yale University, Davenport College Senior Symposium, New Haven, CT.**  
Phylogeography and the origin of species in Amazonia. April 28, 2010.
20. **Yale University, Davenport College Mellon Forum, New Haven, CT.**  
Phylogeography and the origin of species in Amazonia. April 6, 2010.
21. **Yale Institute for Biosphereic Studies, New Haven, CT.**  
Phylogeography of Suriname’s savanna birds & Radio tracking cryptic birds. Oral presentation, Dec 6, 2010.
22. **National Conservation Division of Suriname, Paramaribo, Suriname.**  
Population genetics of the birds inhabiting Surinamese savannas: Results of field research. August 20, 2009.
23. **Tzaneen Primary School, Limpopo Province, South Africa.**  
Series of team presentations on megafauna research, May 2008.
24. **Yachanna Technical High School, Napo Province, Ecuador.**  
Series of team presentations on conservation research, June 2007.



## WET LABORATORY RESEARCH EXPERIENCE

---

- Cornell Laboratory of Ornithology, Fuller Molecular Biology Lab, Ph.D. Candidate, Fall 2013-August 2019.
- Yale University, PI: Richard O. Prum, Genetics Researcher, Sept. 2010-May 2013
- Yale Institute for Biospheric Studies, Conservation Genetics Lab, B.S. Candidate, March 2009-May 2010.
- Yale School of Medicine, Psychiatry, Molecular Neuroscience intern, Summer 2005, June 2007-January 2008

## FIELD RESEARCH AND BIOLOGICAL SPECIMEN COLLECTING

---

- University of Michigan, Ecology and Evolutionary Biology, **Michigan, U.P.**, Boreal migrant collection, June 2022
- Cornell University, Ecology and Evolutionary Biology, **Brazil**, Manakin vocalization survey, July 2015
- Cornell University, Ecology and Evolutionary Biology, **Kenya** Field Ecology T.A., January 2014
- Yale University, Ecology and Evolutionary Biology, **Honduras** Field Assistant, March 2013
- Yale University, Ecology and Evolutionary Biology, **Guatemala** Field Assistant, October 2011
- Boston University, Ecology and Evolution, Milne Bay, **Papua New Guinea** Field Assistant, April-June 2011
- Yale University, Ecology and Evolutionary Biology, **Ecuador** Collecting Expedition Leader, November 2009
- Yale Peabody Museum, Para District, **Suriname** Collecting Expedition Leader, August 2009
- Karongwe Reserve, Limpopo Province, **South Africa** Field Assistant May-July 2008
- Yachana Nature Reserve, **Ecuador** Field Assistant May-June 2007

## TECHNICAL WORKSHOPS

---

- ‘Deep Learning For Biologists,’ Physalia Courses, October 2023, virtual.
- ‘SSB Workshop on Phylogenetic Comparative Methods,’ Chamela, México, January 2023.
- ‘Comparative Genomics’ — Physalia Courses, March 2022, virtual.
- ‘Machine Learning in R’ — Physalia Courses, February 2022, virtual.
- ‘Shiny App development in R’ — Physalia Courses, January 2022, virtual.
- ‘Advanced R Programming’ — Physalia Courses, January 2021, virtual.
- ‘Evolutionary Quantitative Genetics,’ Friday Harbor Labs 2017 Workshop.
- ‘Next Gen Sequencing and Phylogenomics,’ National Evolutionary Synthesis Center, Durham NC 2014.
- ‘Workshop on Phylogenetic Comparative methods,’ SSE/SSB/ASN Evolution Meeting: Guarujá, Brazil 2015.

## PHOTOGRAPHY RECOGNITION

---

### Yale Environmental News

- Fall 2011, Vol.17, No. 1. – The Challenge of Hunting Tropical Hummingbirds – photos only.
- Fall/Winter 2009/2010. Vol. 15, No. 1– The ancestry and genetic differentiation of Surinamese savanna specialists.
- Winter 2009 / Vol. 14, No. 1 – Karongwe Game Reserve Summer 2008 Research Report.

### Natural History Magazine Online

- Another Tenderfoot: Reflections on lessons learned by another young scientist eighty years ago. Photos by Jacob Berv. <https://www.naturalhistorymag.com/endpaper/012456/another-tenderfoot>

### Smithsonian

- Smithsonian.com photo of the day, December 17, 2009.

### Photography awards and grants:

- Louis Sudler Award for the Creative and Performing Arts, Yale University, Fall 2008, Spring 2009, Spring 2010.
- Photographer’s Forum 29th Annual College Photography Contest Spring 2009. Finalist - *Ice Caves of Salzburg*
- The Yale Globalist Magazine International Photography Contest Fall 2008. *Lions in Karongwe* – 2<sup>nd</sup> place.

## REFERENCES

---

### Postdoctoral

- **Brian Weeks**, Ph.D. Assistant Professor, School for Environment and Sustainability, University of Michigan. [bcweeks@umich.edu](mailto:bcweeks@umich.edu). +1 614.216.9266





# JACOB S. BERV

C I R R U C U L U M V I T A E

University of Michigan Department of Ecology and Evolutionary  
Biology, 1105 North University Ave Biological Sciences Building,  
Ann Arbor, MI, 48109-1085

**JakeBerv.com**

- **Matt Friedman**, Ph.D., Director of the Museum of Paleontology, University of Michigan.  
mfriedm@umich.edu. +1 734.764.0490
- **Daniel J. Field**, Ph.D., University Lecturer, Department of Earth Sciences, University of Cambridge.  
djf70@cam.ac.uk. +44 (0) 1223 768329
- **Stephen A. Smith**, Ph.D., Associate Professor, Ecology and Evolutionary Biology.  
ebsmith@umich.edu. +1 734.764.7923

## Ph.D.

- **Amy McCune**, Ph.D. Senior Associate Dean, Faculty Curator of Ichthyology, Cornell University.  
arm2@cornell.edu. +1 607.254.6765

## Undergraduate-Postgraduate

- **Richard O. Prum**, Ph.D. W. R. Coe Professor of Evolutionary Biology, Yale University.  
richard.prum@yale.edu. +1 203.432.9423
- **Kristof Zyskowski**, Ph.D. Collections Manager, Yale Peabody Museum.  
kristof.zyskowski@yale.edu. +1 203.432.9821